

ATUMTEK Height Adjustable  
Standing Desk Converter

Installation Manual

Features & Specifications

A: 33lbs (15kg)  
B: ≤4lbs (≤2kg)  
A+B: 37 lbs (17 kg)

Warning: DO NOT EXCEED MAXIMUM LISTED WEIGHT CAPACITY. SERIOUS INJURY OR PROPERTY DAMAGE MAY OCCUR.

PARTS INCLUDED

1	A X1	B X1	C X1
	D X6	E X6	F X2
			G X2

TOOLS REQUIRED NOT INCLUDED

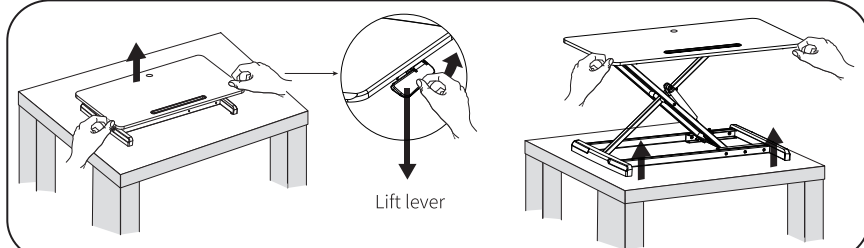


Step 1 Mount the Desktop

Flip the desktop, loosen the cable tie.

When carrying the lift table, be sure to hold the bottom with both hands. Do not subject the table to a separate force. This can cause the tabletop to be out of step with the bottom structure.

Please open slowly & be careful do not get injured due to a preset pressure on the gas spring legs.



Loosen the lift lever and raise the tabletop at a suitable height according to your demands.

Warning: Slowly raising the desktop, to avoid impact.

Step 2 Mount the Keyboard Plate

Install parts B under the keyboard plate. Then fasten the screws to mount the keyboard plate under the desktop.

Step 3 Place the Computer

Place the computer and keyboard on the desk riser. Then organize cables with 2 cable ties (F).

Keep monitor and laptop base fully on the work surface. Allowing any part of base or stand to hang off the edge may result in property damage and/or personal injury.

Raise work surface slowly. Raising work surface too fast may create an unstable situation resulting in property damage and/or personal injury.

Leave enough slack in cable to allow for full range of vertical motion (19.3" / 49 cm). Failure to heed this warning may result in property damage and/or personal injury.

To avoid the potential to pinch cables it is important to follow the cable routing instructions in this manual. Failure to follow these instructions may result in equipment damage or personal injury.

**WARNING**

**PINCH POINT**

DO NOT place hands on or near support bars. Pinch points are created during lifting and lowering the work surface. Failure to follow these instructions may result in serious personal injury.

ATUMTEK

Thank you for choosing ATUMTEK!

ATUMTEK provides warranty coverage of 36 month on all of its brand name products purchased through authorized channels.

If you need help with this product, please do not hesitate to contact us via:

www.atumtek.com  
OR  
support@atumtek.com

EC	REP	Prolinx GmbH Brehmstr.56, 40239 Duesseldorf Germany
UK	REP	Syncwire UK Ltd C/O Lai and Co.109 Portland Street, Manchester, M1 6N